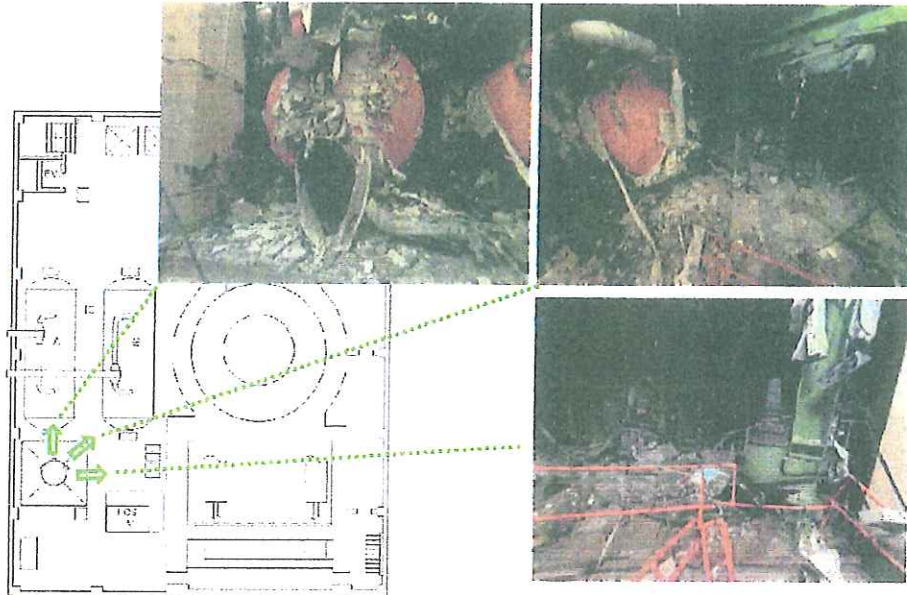
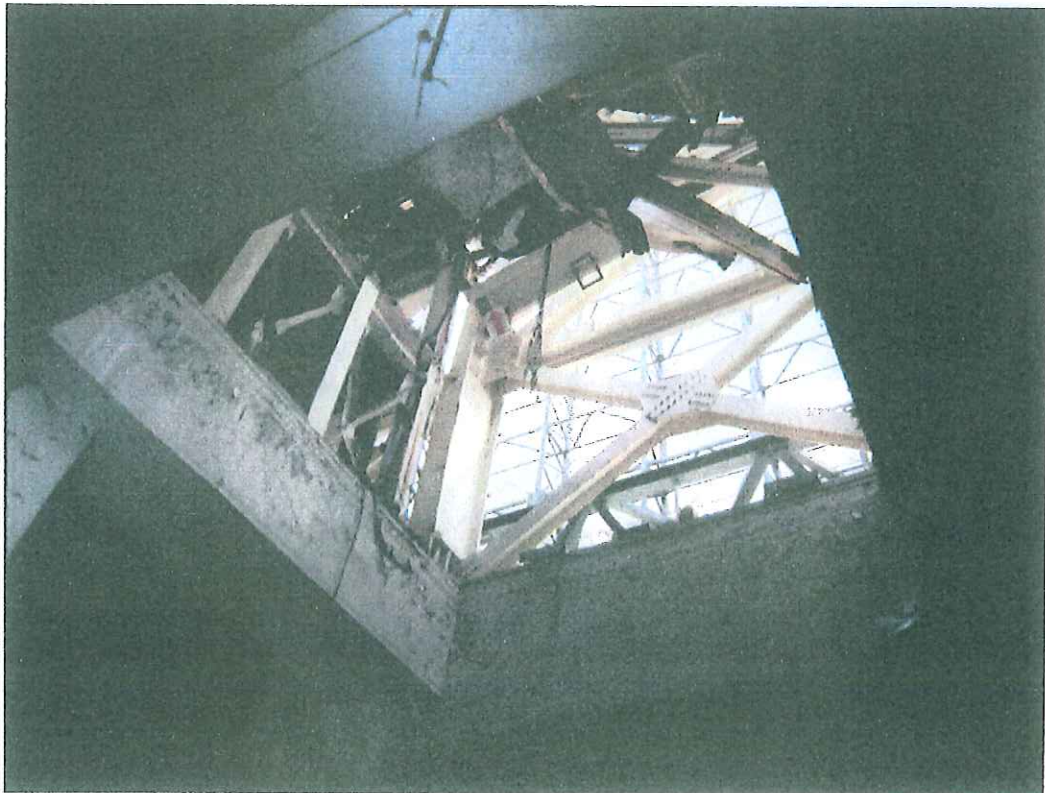
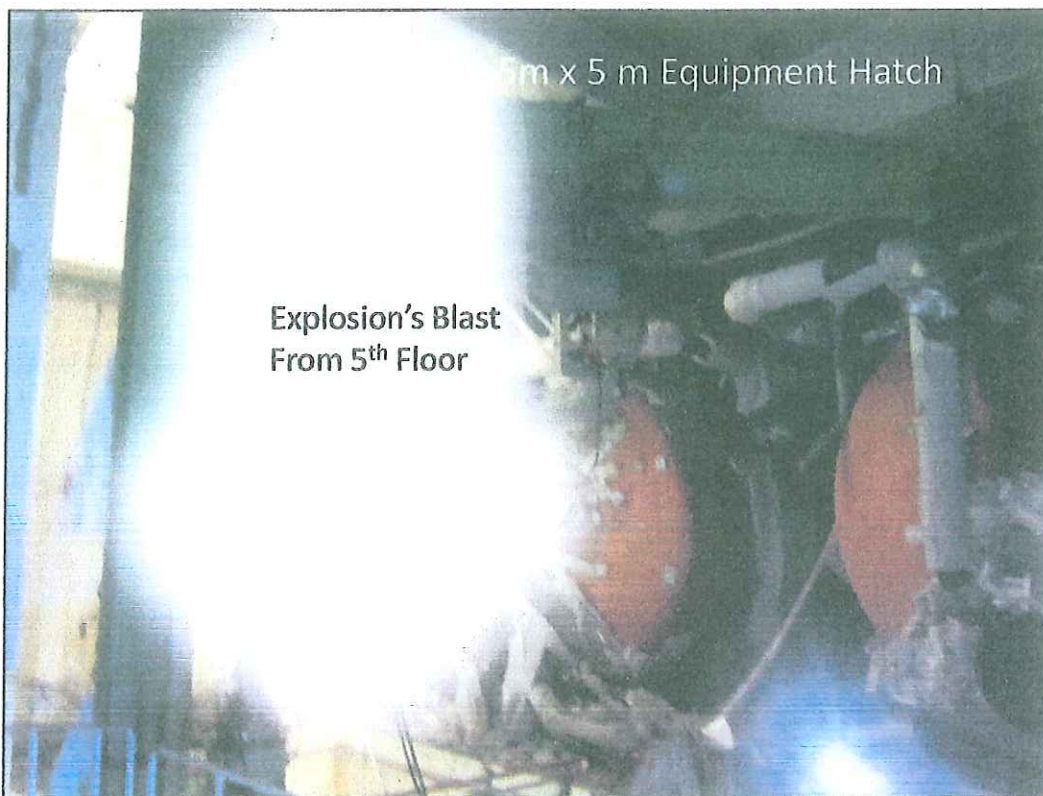


### The Inside of the 4<sup>th</sup> Floor after the Explosion



東京電力





5m x 5 m Equipment Hatch

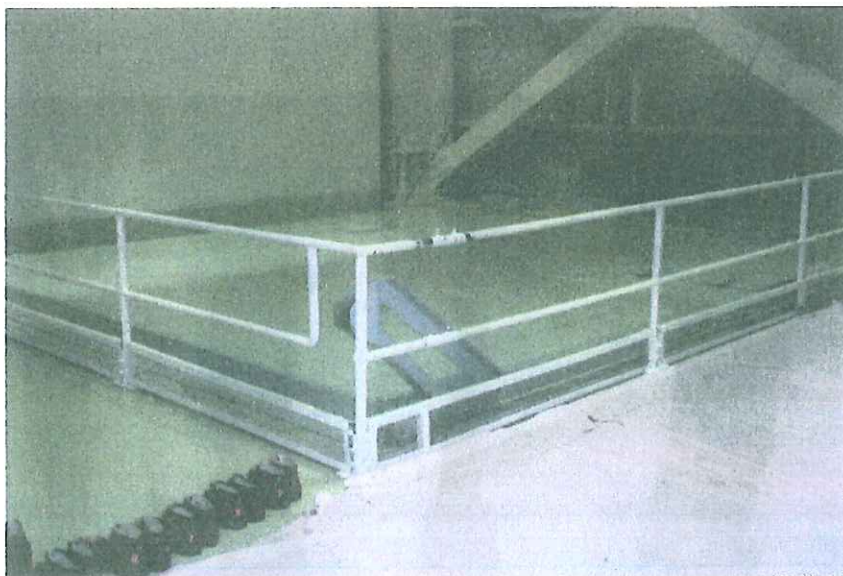
Explosion's Blast  
From 5<sup>th</sup> Floor

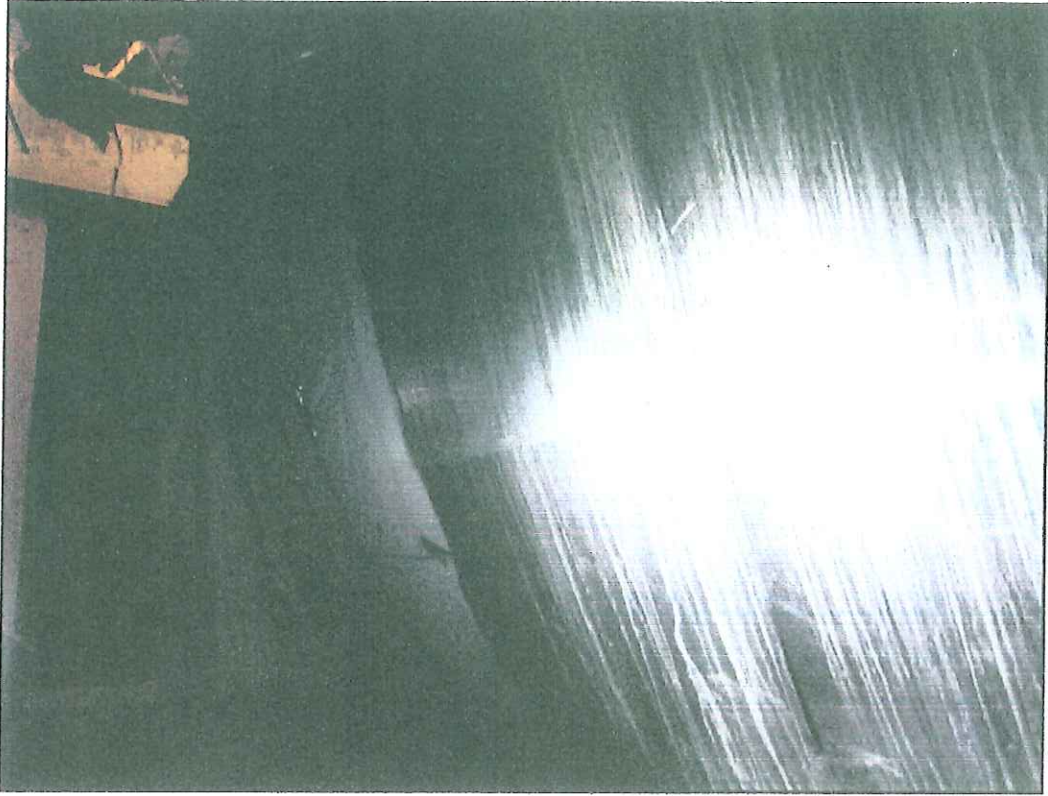
重さ 1.5t



行方不明

The equipment hatch was not open when the explosion occurred.





新潟県技術委員会による現場調査  
(2015年2月21日)

